

How To Create A Diagnostics Report

© 2008 Newtec cy.

The material contained in this document is confidential and intended for use only by parties authorised by Newtec.

All Rights Reserved. No part of this document may be photocopied, reproduced, stored in a retrieval system, or transmitted, in any form or by any means whether, electronic, mechanical, or otherwise without the prior written permission of Newtec cy.

Newtec cy
Laarstraat 5
9100 Sint-Niklaas, Belgium

General: +32 (0)3 780 65 00
www.newtec.eu
Fax +32 (0)3 780 65 49
General: general@newtec.eu

Version history and applicability

Document version	Date	Author	Comment
version 1.0	September 5 th 2008	SRO/NWH	Appl. Azimuth
Version 1.1	November 18 th 2008	GWl	Appli. AZ + EL + HZ

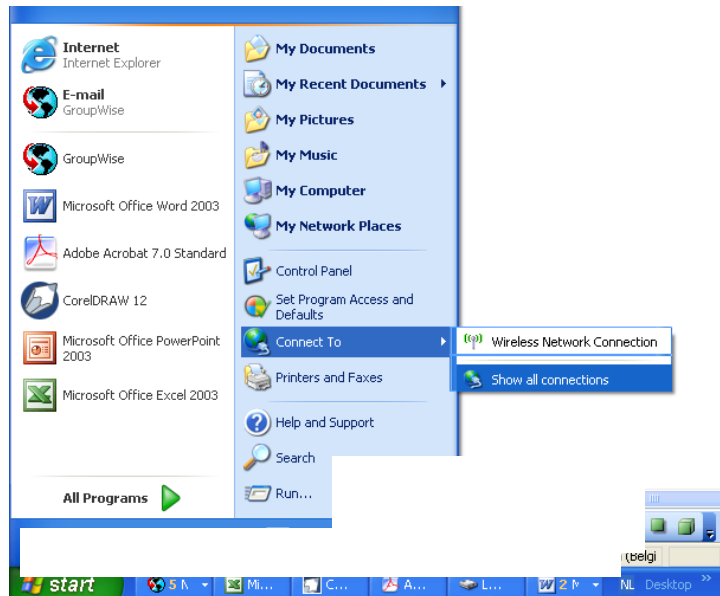
HOW TO CREATE A DIAGNOSTICS REPORT

The professional equipment platforms of Newtec (Azimuth, Elevation and Horizon series) are equipped with a powerful and easy to use web interface (GWIG) which allows customers to remotely monitor and control their equipment through a web browser.

To use the web interface, the TCP/IP properties of the computer have to be adapted in order to set an IP address manually that is within the range of the devices IP address. For example: take as IP address 168.0.0.1 on the computer and 168.0.0.2 on the device. Make sure that that no popup blockers or firewall are active!

To adapt the TCP/IP properties:

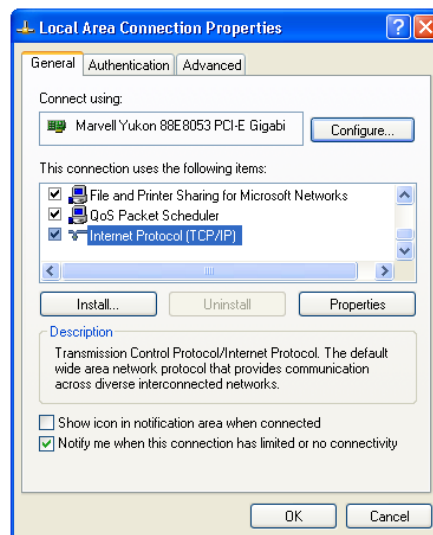
1. Go to Start < **connect to** < **show all connections**:



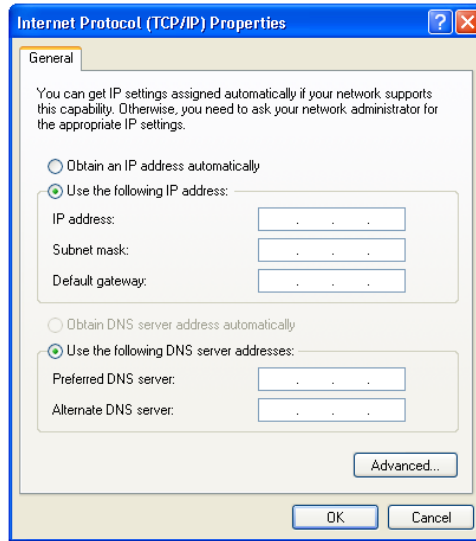
- And click on **show all connections**



2. Click with the Right Mouse button on **Local Area Connection** and select **properties**



3. Scroll down and click on **Internet Protocol (TCP/IP)** then click on **Properties**.



- Change the **IP address field** to for example, 168.0.0.1
- And the **Subnet mask** to for example, 255.255.0.0

The Ethernet port of the device has to be connected with the Ethernet port of a computer by a **crossed network cable**.

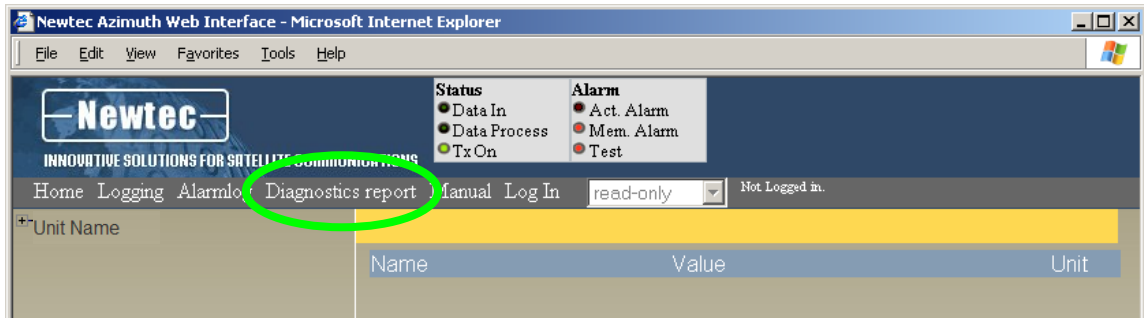
- Use a web browser (Internet explorer 5.5 or later, Mozilla, etc.) to open the web interface of the modulator by typing the following address in the address balk: **http://ip_address_device**.
- The **ip_address_device** can be found by going to the following menu: **../unit/Setup/Ethernet settings** with the keypad on the front panel of the device.



By default the IP address of all Newtec devices is 10.0.0.1

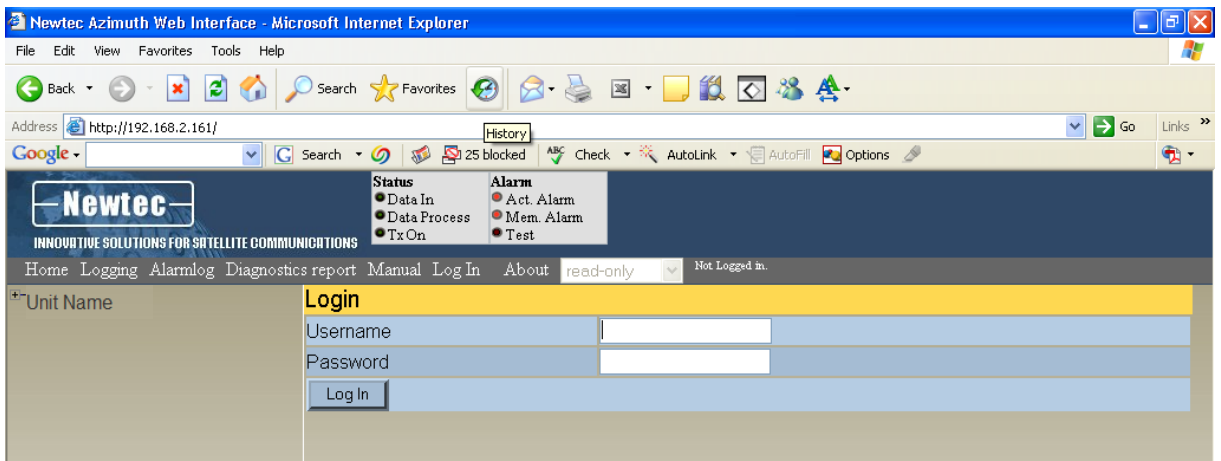
<Unit Name>/Unit/Setup/Ethernet settings
Device IP address: 010.000.000.001

The following page will be displayed:



In this mode, you will have an overview of all the parameters on the device by clicking on the name of the device on the left hand side of the screen.

To change the parameters of the device, one has to log in into the device, by clicking on **Log In**.



Log in with the user name and password that is defined in the ../Unit/Setup/Web interface menu.



By default the **Login Username** and **Password** is **<root>** respectively.

Once logged in, there are three levels:

- **read-only:** in this mode you can only see (read) the parameters corresponding to the operator mode, they cannot be changed.
- **operator:** corresponds with the device Normal mode, enables the default set of parameters that are most frequently used.
- **administrator:** corresponds with the device Expert mode, gives an expert user access to an additional set of more advanced parameters.

All the parameters of the device can now be viewed and changed remotely through the web-interface.

Web Interface

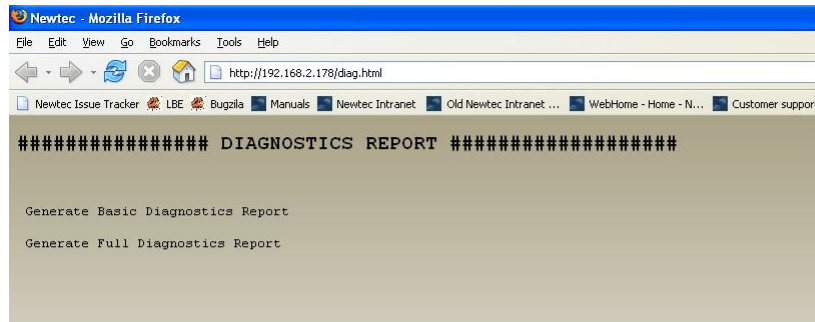
The web interface displays seven main menus:

- **Home:** This menu allows monitoring and control of all the parameters of the device remotely through the web-interface. All the parameters that can be changed through the keypad can also be changed in the Home menu.
- **Logging:** The menu logging gives an overview of the most recent events
- **Alarmlog:** In the menu Alarmlog the most recent alarms can be viewed.
- **Diagnostics report:** the menu generates a diagnostics report which gives an overview of the status of the different parameters of the device. This is very useful to have by hand if you need to contacts support for technical questions.

After selecting Diagnostics report the following page will be displayed:

- Select Generate Basic Diagnostic Report

After a few seconds the report appears (please leave the document in html format):



- **Manual**: the complete manual with RMCP commands of the corresponding device is stored here in HTML format.
- **Log In resp Log out**: this menu is used to log in or to log out when a user is logged in into the device.
- **About**: this menu shows the version number of the GWIG used.