

- Feature-rich performance trending and analysis tools
- Bubble-up & drill down alarm identification flow
- Comprehensive alarm lifecycle management
- Streamlined service configuration & activation
- Single management interface
- Scalable for a small private hub to a global HTS network
- APIs for OSS/BSS integration
- Flexible VNO model

## Managing a Newtec Dialog Network

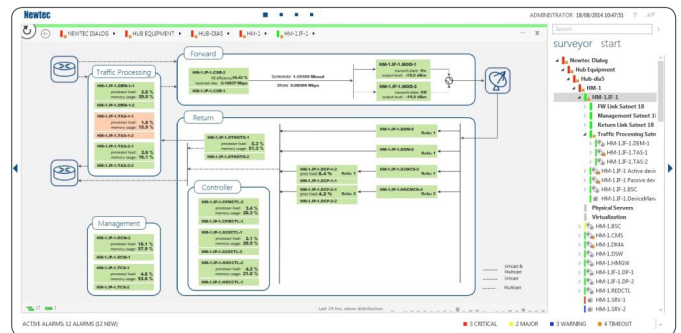
An effective Network Management System (NMS) is a vital tool for the operation of any network service provider. **Maximal operational efficiency and service delivery assurance** are key network operational concerns. The addressing of both concerns through a single management interface provides a key advantage over a plethora of management tools.

Based on insightful resource performance trends provided by the NMS, the service provider can **optimize the network and plan possible extensions**. Given the technical expertise and CAPEX investment required to operate a satellite hub, a flexible Virtual Network Operator (VNO) model enables service providers to offer services with limited investment. The integration of the NMS with other OSS and BSS elements optimizes a company's overall business and operational processes.

The Newtec Dialog® platform is fitted with a comprehensive NMS, providing the service provider with a **key enabler for customer retention and loyalty**

## Efficient and Effective Service Assurance

The Newtec Dialog NMS performs both short and long term trending to assess the performance of services and resources of the Newtec Dialog network. To react to degradations of the network, the NMS features intelligent alarming capabilities such as hysteresis, absolute and relative thresholds.



The navigation of the Graphical User Interface (GUI) is built around a topology tree structure with bubble-up alarm severity propagation and drill-down capabilities. This allows rapid isolation of fault conditions and service-delivery impact through powerful analysis features such as export, statistical analysis.

In addition, the NMS features comprehensive alarm lifecycle management via a user-centric alarm console. This versatile console enables alarm sorting, smart filtering, masking & acknowledging, exporting and much more.



## Streamlined Service Activation and Configuration

An essential ingredient to efficient operations is configuring and activating new services with ease. To this end, the Newtec Dialog NMS allows new services to be provisioned over the platform through an easy-to-use, workflow-based GUI. Satellite terminal configuration is made easy through use of profiles and duplication.

Installation of satellite terminals is made extremely simple by over-the-air provisioning functionality. Besides simplicity, it also ensures end-to-end consistency for services running over a Newtec Dialog network.

## Network Optimization Enabler

The rollout of a satellite network often starts off with an initial assumption of link budgets, traffic patterns, etc. As the network further expands, it is vital for network operators to be able to **monitor how efficiently and effectively services are being delivered**. The Newtec Dialog NMS comes with a breadth of long-term KPI trends on satellite link efficiency, traffic usage, congestion level, etc. This enables a network operator to optimize the efficiency of the network, while still maintaining an effective service.

## OSS and BSS Integration

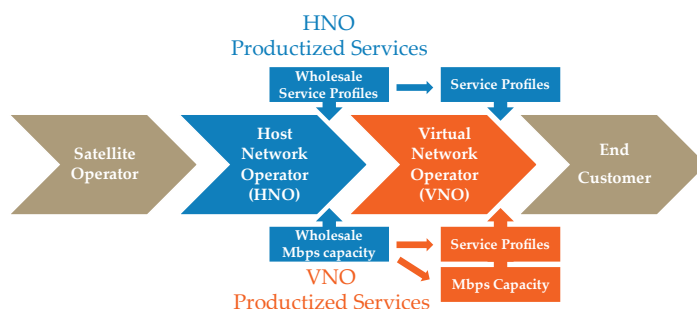
The Newtec Dialog NMS comes with a full set of APIs. This enables service providers to easily integrate OSS and BSS tools with the Newtec Dialog platform. These can be:

- Billing & revenue management systems
- Provisioning systems
- Reservation systems, such as the Newtec SatLink Manager or other 3<sup>rd</sup> party tools
- Umbrella network management systems that also cover, for example, terrestrial connectivity
- ...

## VNO Support

In some cases, a satellite network service provider opts not to operate his own satellite hub. To this end, the Newtec Dialog NMS features a very flexible Virtual Network Operator (VNO) model.

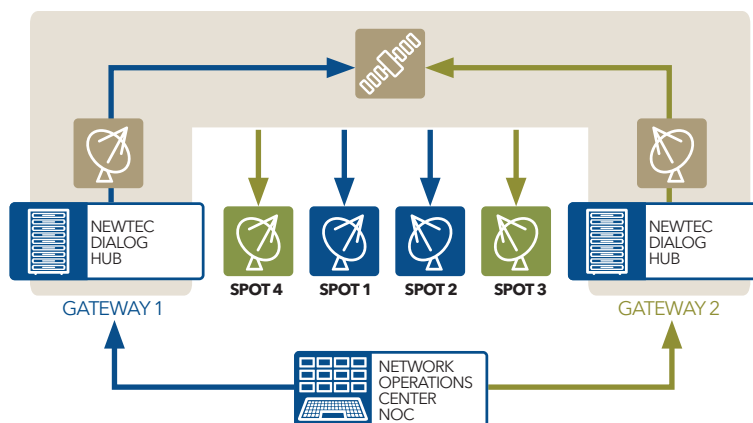
A Host Network Operator (HNO) can define management domains to which a VNO has access. This enables business models in which an HNO offers dedicated satellite capacity to a VNO, or in which a VNO acts as reseller for profiles defined by the HNO.



## Single, Scalable Management Interface

The Newtec Dialog NMS provides a single, unified interface for all configuration, monitoring and troubleshooting operations on the complete Newtec Dialog platform.

It is made with the scalability of the Newtec Dialog platform in mind. Whether a small, dedicated private hub or a large High-Throughput Satellite (HTS) network with teleports at different geographical locations, the Newtec Dialog platform can handle all operations whatever their size. This means network operators can handle their globally distributed Newtec Dialog platform all from the same Network Operations Center (NOC).



This brochure is provided for information purposes only. The details contained in this document, including product and feature specifications, are subject to change without notice and shall not bind Newtec in any way.